

Electrical Print Reading Training

Troubleshooting from Substation Electrical Prints



Leading electricity providers know it takes more than field technicians and a dispatch center to properly maintain critical power system assets that make up their transmission and distribution systems. To be effective, your team needs to acquire knowledge and product-specific skills to allow them to accurately troubleshoot and repair this equipment.

With training dollars being stretched to their limits—and employee productivity always an issue—training that produces results is more important than ever.

Who Should Attend

Designed for electrical technicians, field engineers, project managers, inspectors, contractors and journeyman electricians who depend on effective skills and knowledge of print reading.

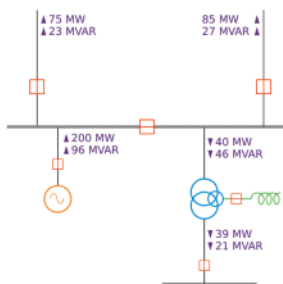
Course Description (24 Hours)

This course is designed to prepare electrical personnel to troubleshoot from electrical prints commonly used at power substations. Students will begin with one-lines and three-lines and progress through schematics.

Students may bring examples of their own substation's prints to use during practical exercises. Low-, medium- and high-voltage installations will be reviewed as requested by students.

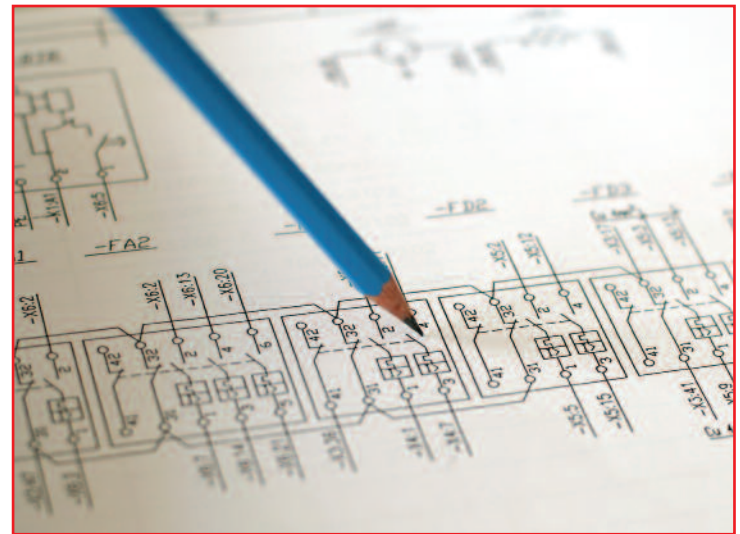
Course Outline

- I. PRINT READING BASICS
 - Legends and Electrical Symbols
 - Basic Layout
 - Practical Exercise Using Example Prints
- II. ONE-LINE AND THREE-LINE DIAGRAMMS
 - Purpose
 - Types
 - Interpretation and Use
 - Practical Exercise
- III. SCHEMATICS
 - Purpose
 - Interpretation and Use
 - Practical Exercise
- IV. FINAL EXAM



Customer-specific prints should include the following items (all SITE SPECIFIC and highly recommended IN ADVANCE if possible):

- Legends
- Electrical Symbols
- Basic Layout Prints
- One-Line Diagrams
- Three-Line Diagrams
- Schematics



Variety of Commonly Requested Maintenance Courses

Waukesha Training has built a national reputation as a premier Load Tap Changer training organization. This reputation is based on hundreds of hands-on classes completed for utility, industrial and OEM customers.

Using field-experienced technicians and engineers to conduct training programs and actual transformer equipment and devices to conduct hands-on exercises continues to be a winning combination for learning retention.

Continued Development

Waukesha Training continuously develops course offerings to serve the industry. We also work closely with customers to develop specialized training courses to fit their internal development programs.

CLASS CHECKLIST

All questions must be answered and faxed back to us at 214 / 637-1157 PRIOR TO scheduling a class date.

1. Do you want on-site or offsite training? ON-SITE OFFSITE
2. How many students will be in the class? _____ (max 12)
3. If on-site, do you have classroom facilities that can be set up with benches or tables? YES NO
4. Does the classroom have whiteboard, markers and digital projector? YES NO
5. Will you be supplying any drawings/prints/schematics? YES (if yes, please send in advance if possible) NO

Contact Us for Additional Information or to Schedule Your Class:

call 800-338-5526

visit www.WaukeshaElectric.com



9011 Governors Row • Dallas, TX 75247-3709

© 2010 Waukesha Electric Systems, Inc. TRNG-1001