

2nd Generation Nitrogen Generator System Manual

GENERAL DESCRIPTION

The N2 Nitrogen Generator is designed for use on tap changers, breakers, main tanks or any other electrical device requiring a gas-blanketed enclosure. The unit produces nitrogen by separating oxygen from compressed air by means of hollow fiberglass separation membranes. The compressed air is supplied by an on-board compressor and the generated nitrogen (N₂) is fed to internal storage vessels. The output concentration of the air separator (nitrogen purity) is factory pre-set. The final regulator system maintains the gas-blanketed tank pressure between 0.5 and 5.0 psi at all times. If the tank pressure reaches a minimum of 0.5 psi, nitrogen is sent from the storage vessels through the regulator assembly to the tank. Should tank pressure rise above 5.5 psi, a relief valve will open to bleed off excess pressure to atmosphere.

IMPORTANT: Changing the output concentration may only be performed by trained and authorized service technicians.

SYSTEM PRINCIPLE OF OPERATION

Refer to figure 1. The nitrogen generator system is contained within a climate-controlled cabinet that closely controls the temperature range that the compressor system and nitrogen membrane are required to operate within. When the on-board nitrogen storage tank drains to a preset level (100psi), a compressor run cycle is initiated to refill the storage tank. Cool filtered air is drawn into the compressor and compressed to a nominal output of 150 psi. The hot compressed air is then directed through a heat exchanger that cools the compressed air below dew point for easier moisture removal. As the hot air travels through the coalescing filter, the condensed moisture collects in the filter bowl for draining at the end of the compressor cycle. The final filter removes all particulates in the compressed air stream before entering into the membrane assembly. As the air travels through the membrane, the outgoing nitrogen is regulated to a specific flow rate and pressure that defines nitrogen purity at the given membrane operating temperature. The output nitrogen of the membrane is diverted to atmosphere for a preset time, ensuring all contaminate gases are purged before diverting to the storage tank. The generator storage tank stores 3 gallons of Nitrogen at 100–120 psi to supply the final regulator system controlling the external gas space.

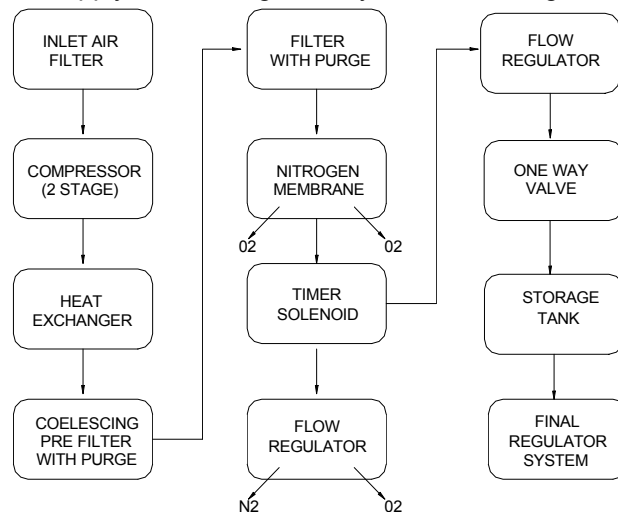


Figure 1 – Nitrogen Generator Module Functional Operation

2nd Generation Nitrogen Generator System Manual

NITROGEN MEMBRANE PRINCIPLE OF OPERATION

Refer to Figure 2 below. Compressed air flows into the hollow fiber membrane. The various air components, such as oxygen, nitrogen, carbon dioxide and water vapor pass through the membrane wall, but the rate at which this occurs differs for the various gasses. Oxygen and water vapor have a high diffusion rate and diffuse rapidly through the membrane wall. Nitrogen has a low diffusion rate and penetrates the membrane wall slowly; mainly at the end of the of the hollow fibers. The purity of the nitrogen at the end of the fibers depends on the velocity of the gas flow. The nitrogen capacity of the membrane depends on the flow rate, operating temperature and operating pressure of the compressor.

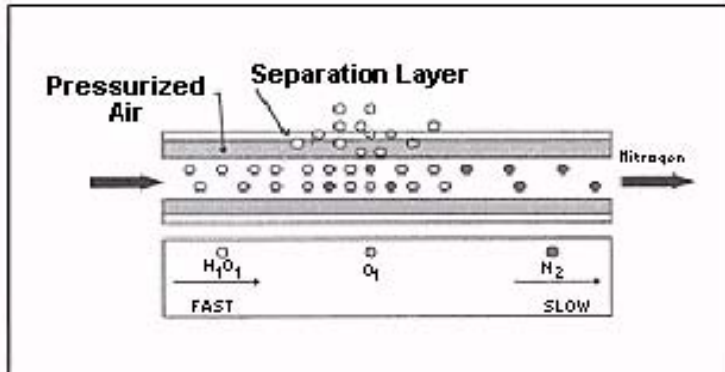









Figure 2 – Membrane and Gas Flow




2nd Generation Nitrogen Generator System Manual

SAFETY INFORMATION

Correct use of this equipment is important for your personal safety and for trouble-free functioning of the unit. Incorrect control or attempts to perform adjustments could cause damage or lead to incorrect gas supply. Be sure to read and understand all instructions before attempting to operate the unit. The unit is designed to produce nitrogen. The nitrogen is supplied by an internal generator that produces nitrogen from ambient air through a process of separating oxygen from normal air. You must not use the unit for any other purpose than what is specified. Do not operate the unit beyond its limits (see Specifications). In addition to the warnings and cautions in this manual, use the following safety guidelines for safe operation of the unit.

-  **WARNING** - This unit is an electrical appliance. Make sure that the main power supply is disconnected before you perform installation, maintenance or repair work.
-  **WARNING** - If you must work on the equipment with the main power supply on, be aware of electrical hazards.
-  **DANGER** - When working on the equipment, do not wear loose clothes, jewelry or hair. They could become en-tangled in the fan blades.
-  **WARNING** - The compressor becomes very hot when operating. Be careful when you open the cabinet after the unit has been operating for any length of time. Do not touch the compressor. Allow it to cool down before you start to perform any service on the unit. If you must work on the unit while it is hot, be sure to wear protective gloves to protect yourself from the heat.
-  **CAUTION** - Do not block the ventilation inlets and outlets as this could cause overheating and damage to the unit.
-  **WARNING** - In order to prevent injury or damage caused by the sudden release of compressed air, make sure that the unit and connected systems are fully de-pressurized before you start uncoupling parts of the system. Make sure no one tampers with the pressure-relief valve.
-  **DANGER** - This unit produces nitrogen and oxygen-enriched air. Nitrogen can cause suffocation. Oxygen-enriched air can lead to increased risk of fire in the event of contact with flammable products. Ensure adequate ventilation at all times.

IMPORTANT: The following words and symbols appear throughout this manual and designate important safety instructions:

-  **DANGER** - Indicates information important to the proper operation of the equipment. Failure to observe will result in damage to the equipment and/or severe bodily injury or death.
-  **WARNING** - Indicates information important to the proper operation of the equipment. Failure to observe may result in damage to the equipment and/or severe bodily injury or death.
-  **CAUTION** - Indicates information important to the proper operation of the equipment. Failure to observe may result in damage to the equipment.

Read all safety instructions to avoid personal injury or death, and to avoid damage to the unit or property.

2nd Generation Nitrogen Generator System Manual

SPECIFICATIONS

Nominal Performance		Electrical	
Nitrogen (N ₂) *	125psi	Voltage/Frequency	120Vac, 60 Hz
Purity of N ₂ delivered *	99.5%	Power consumption *	1–19A depending on ambient conditions
Flow rate*	~3.0 SLPM		
Dew point of N ₂ delivered *	<–50°C	Potential free alarm	Normally open, 1A
Average performance from –40° to 50°C		Ambient Conditions	
Purity of N ₂ delivered	>99.0%	Temperature Range	–40° to +40°C
Dew point of N ₂ delivered	–40°C	Air quality	Normally clean ambient air
Flow rate	1.0 SLPM Continuous 5.0 SLPM Purge	Relative humidity	< 90%
Maximum Oil Volume to Blanket	30,000 gallons	Altitude	0–6000 ft
Final Output Pressure		Environment	
Maintained between 0.2 and 5.5 psi		Noise level	Less than 65 db(A)
* Nitrogen Delivery properties at nominal temperature of 25°C.		Location	Outdoors, wall mounted
		Safety standards	CE; applicable standards
		* Typical operation: Fan only — 1A Heaters (low ambients) — 10A AC (high ambients) — 5A Compressor Run (5 min) — 9A	

Table 1 – Nitrogen Generator Specifications

⚠ CAUTION – The nitrogen generator is designed to provide the equivalent volume of nitrogen as a standard nitrogen system consuming the standard 225 cuft bottle every 4 days or more. If the application requires more nitrogen volume, consult the factory for a specialized unit. *Operating the equipment beyond the rated 1 lpm continuous will result in damage to the unit and void the manufacturer’s warranty.*

2nd Generation Nitrogen Generator System Manual

INSTALLATION — SINGLE TRANSFORMER

- ⚠ CAUTION** - The unit must be mounted in an upright position. Do not mount unit on its side or back.
- ⚠ WARNING** - A crane or similar lifting device is required to lift and secure unit to wall mounting surface.
- ⚠ CAUTION** - Do not block the ventilation inlets and outlets, this could cause overheating and damage to the unit.
- ⚠ WARNING** – Support structure and mounting hardware must be capable of supporting the generator weight of 380 lbs minimum. Cabinet is designed to be mounted using 1/2” hardware.
 - The unit must be mounted above grade level.
 - Install unit away from heat sources.
 - Do not install in an enclosed cabinet; proper ventilation is required.

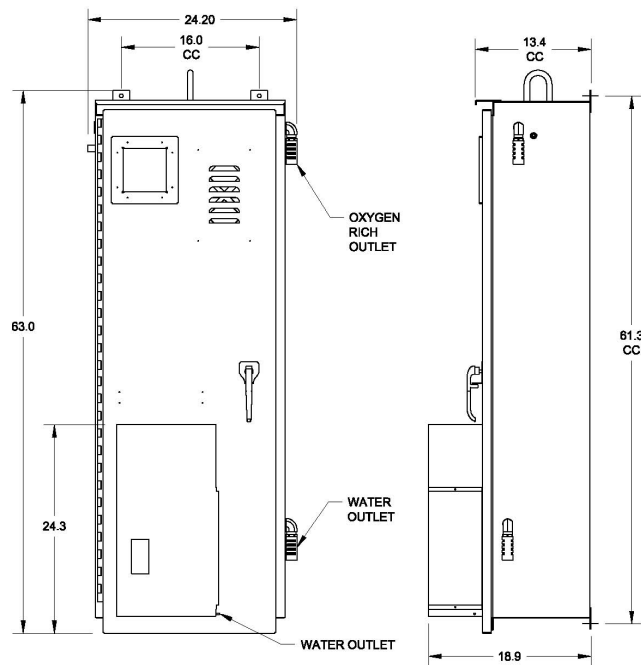


Figure 3 – Generator mounting dimensions

1. Measure and mark the mounting holes or studs as shown by the center-to-center distances on figure 3. **IMPORTANT:** Make sure the bolt holes are level and high enough to support cabinet above grade.
2. Lift the unit into position with crane and top hook.
3. Secure hardware. **NOTE:** Cabinet is designed to be installed using 1/2” hardware.
4. Plumb to transformer using copper or stainless steel 1/4” or larger tubing.
NOTE: Inlet and outlet ports of generator are female 1/4” NPT.

2nd Generation Nitrogen Generator System Manual

INSTALLATION — MULTIPLE TRANSFORMER

- ⚠ CAUTION** - The unit must be mounted in an upright position. Do not mount unit on its side or back.
- ⚠ WARNING** - A crane or similar lifting device is required to lift and secure unit to wall mounting surface.
- ⚠ CAUTION** - Do not block the ventilation inlets and outlets, as this could cause overheating and damage to the unit.
- ⚠ WARNING** – Support structure and mounting hardware must be capable of supporting the generator weight of 380 lbs minimum. Cabinet is designed to be mounted using 1/2” hardware.
- ⚠ WARNING** – Use of the Nitrogen Generator for multiple transformers requires evaluation of several to maintain the health of each transformer. Do not proceed unless all conditions are met.

1. Calculate the required usage for each transformer to be connected to the generator. The total sum of usage cannot exceed 1 slpm. For example, 1 slpm continuous usage equates to using a single standard 225 cuft nitrogen bottle every 4 days.
2. IMPORTANT: Each transformer must have a final nitrogen pressure regulation system with tank alarms.
3. IMPORTANT: Piping for each transformer must contain a one-way valve to prevent airspace backflow to the supply line.
4. IMPORTANT: Piping for each transformer must contain a separate isolation valve.
5. IMPORTANT: Each transformer must be protected by an appropriate pressure/vacuum device.

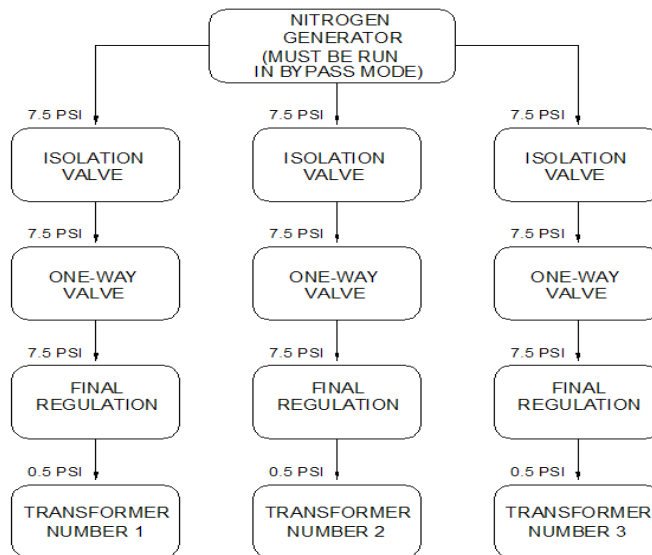


Figure 4 – Multiple Transformer Installation Flow

2nd Generation Nitrogen Generator System Manual

HVS Part Number:
 MN2-0A0133

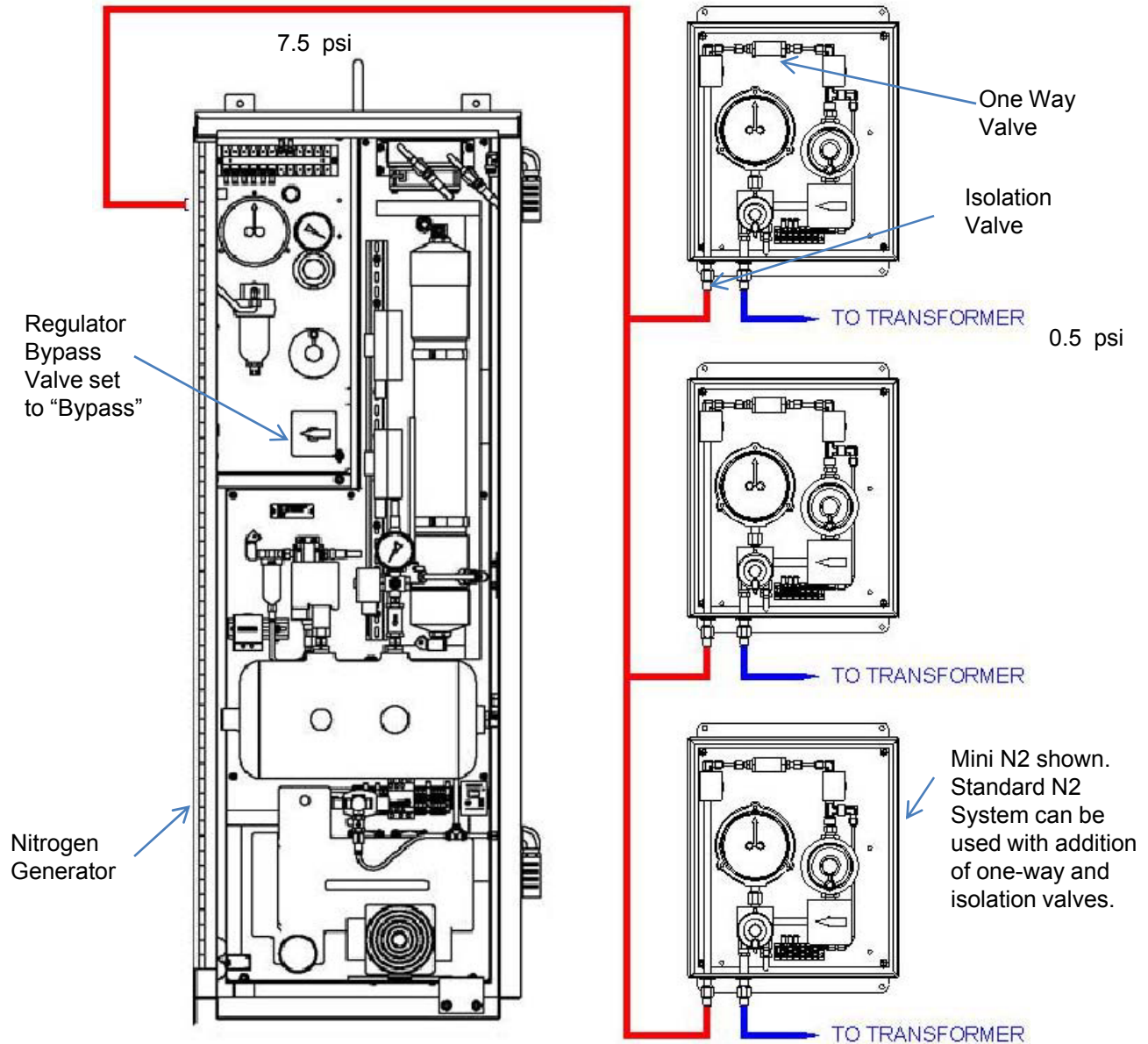


Figure 5 – Typical Example of Multiple Transformer Installation

CAUTION – The recommended maximum volume of oil to be blanketed is 30,000 gallons based upon a 12% nitrogen-to-oil blanket ratio. For larger oil volume requirements, consult the factory for a specialized unit. Use of the nitrogen generator for larger oil volumes will void the manufacturer's warranty.

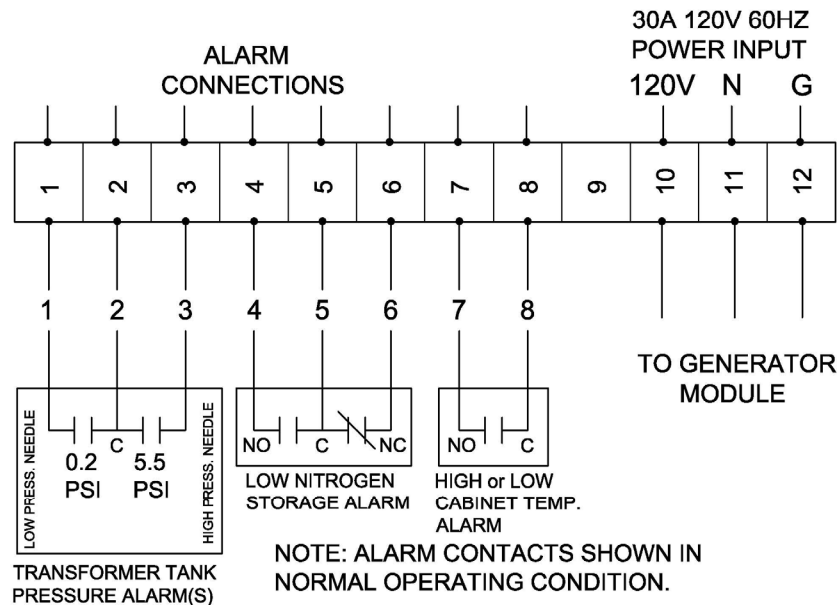
The patented 2nd Generation Nitrogen Generator system is manufactured and distributed by High Voltage Supply, a division of Waukesha Electric Systems, Inc. U.S. Patent Nos. 6,581,694; 6,568,287; 6,062,821; 5,902,381 and 5,744,764.

2nd Generation Nitrogen Generator System Manual

ELECTRICAL CONNECTIONS

⚠ WARNING - Electrical shock hazard. Failure to follow these instructions could result in serious injury or death.

- Electrical ground is required on this appliance.
- Do not use an extension cord with this appliance.
- The unit should be grounded according to local electrical codes to prevent the possibility of electrical shock. It requires a grounded receptacle with separate electrical lines, protected by fuses or circuit breaker of the proper rating.
- Check with a qualified electrician if you are in doubt as to whether the appliance is properly grounded.



WHEN IN OPERATION, LOW AND HIGH PRESSURE CONTACTS ARE OPEN AND NITROGEN STORAGE CONTACTS ARE OPEN, (ABOVE 50 PSI STORAGE TANK PRESSURE).

Figure 6 – Alarm and Power Connections

1. Conduit entry points are located on both sides of the cabinet. Install conduit with sealed connectors to prevent water entry to the generator system.
2. After pulling wire, seal conduit entry with expanding foam or similar. The generator compressor must not be allowed to draw air from conduit.
3. Locate the terminal block on the regulator module. Loosen the two thumb screws and swing terminal panel cover out of the way to expose terminal connections.
4. Connect the wiring to the terminals as shown in Figure 6 above.
5. Alarm connections are not required for generator operation but are highly recommended.
6. Reposition the terminal panel cover and tighten thumb screws.

2nd Generation Nitrogen Generator System Manual

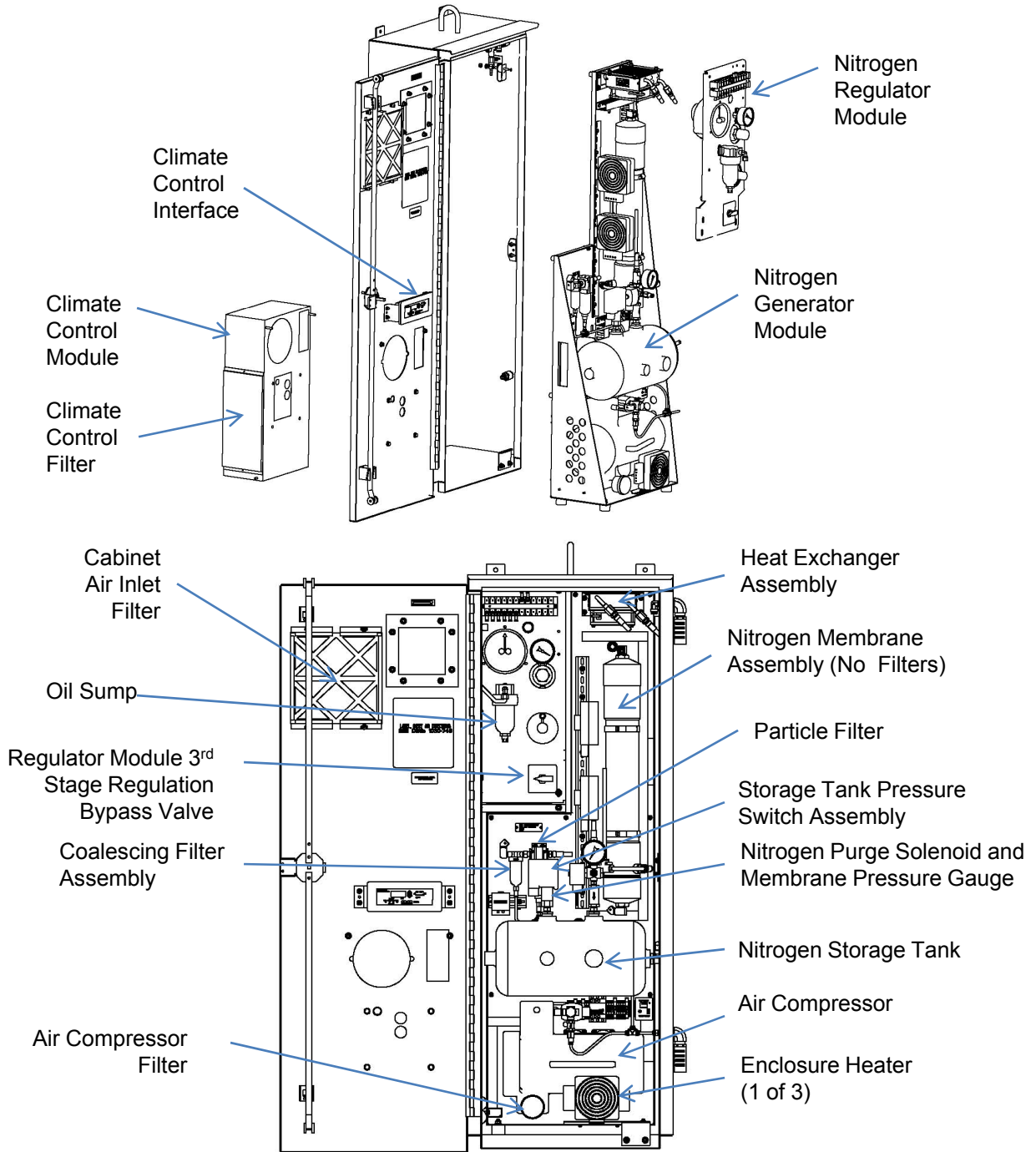


Figure 7 – Nitrogen System Component Identification

The patented 2nd Generation Nitrogen Generator system is manufactured and distributed by High Voltage Supply, a division of Waukesha Electric Systems, Inc. **U.S. Patent Nos. 6,581,694; 6,568,287; 6,062,821; 5,902,381 and 5,744,764.**

2nd Generation Nitrogen Generator System Manual

START UP

IMPORTANT: Make sure the unit has been properly installed according to the Installation Instructions included in this manual.

CAUTION - When the compressor starts, the cooling fan on the heat exchanger should rotate. If fan is not rotating, turn unit off or damage to the unit could occur.

The generator system is factory set for optimum purity and no adjustments are necessary. The design of the system is such that the operating temperatures of all components must be controlled to optimize nitrogen purity. Because of this, it is necessary for the climate control system be energized for a period of 8 hours prior to releasing nitrogen from the generation system.

The climate control system is preset to cool when the enclosure air temperatures exceed 80°F and heat when the enclosure air temperature declines below 63°F. The enclosure air is continually cycled through the system to avoid temperature gradients anywhere in the system.

After all components have been brought within temperature specifications, the generator is ready for use and the gas space purge operation can begin.

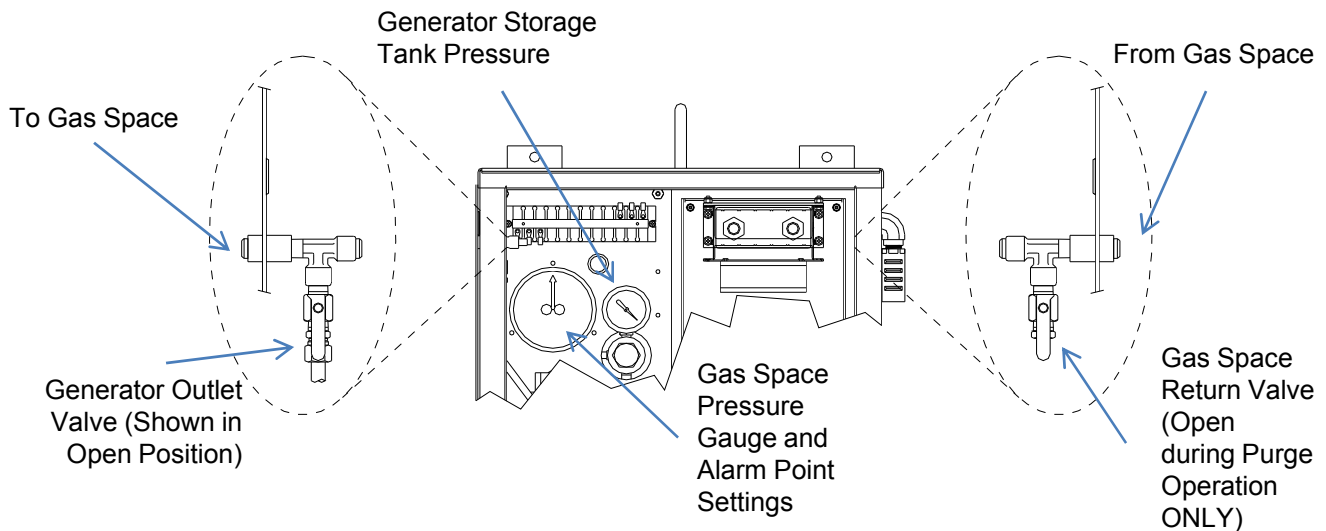


Figure 8 – Generator Inlet and Outlet Valves

1. Before operating, the gas space pressure switch contacts must be set to allow the needle to move (alarm points protect the needle during transport).
2. Loosen the clamp around the needle alarm knobs. There is a small screw on the bottom of the clamp.
3. Adjust the low pressure contact (left knob) to 0.2 psi. Adjust the high pressure contact (right knob) to 5.5 psi.
4. Tighten the clamp.
5. Turn on the main power feed to the generator with appropriate fuse or breaker disconnect.
6. Verify that the climate control internal fan is operating and climate control interface is energized.

2nd Generation Nitrogen Generator System Manual

STARTUP (continued)

7. Verify storage tank pressure. If tank is empty or below 100psi AND if ambient temperature is between 105°F and 40°F, the air compressor should immediately start and run for approximately 5–7 minutes. NOTE: A strong hissing sound will be heard for the first 2–3 minutes as the nitrogen is diverted to atmosphere before being brought to full purity.
8. If compressor does not run due to ambient temperatures, close generator door and wait for enclosure temperature to be brought within specifications.
9. After compressor charges the storage tank and shuts off, perform a continuity check on the following alarms contacts:

Terminals 1 to 2 – OPEN	Terminals 2 to 3 – OPEN
Terminals 4 to 5 – OPEN	Terminals 5 to 6 – CLOSED
Terminals 7 to 8 – OPEN	
10. Open the outlet valve.
11. Compressor will cycle as storage tank drains to 100 psi. Compressor shut-off is 110–125 psi. Typical runtime is 5–10 minutes, depending upon altitude.
12. Rotate the regulator panel bypass valve from full regulation to bypass operation.
13. Open the return valve.
14. Close the generator door and latch.
15. Purge for the calculated amount of time based upon 5 liters per minute flow rate.
16. Close return valve.
17. Change regulator panel bypass valve from bypass mode to full regulation mode. This will maintain the gas space from 0.5 psi to 5 psi.

IMPORTANT: Check all pipes and connection for leaks using soap or leak-tracing spray. Any leakage will reduce capacity considerably.

PROPER SYSTEM OPERATION CHECKS

1. During air compressor run and with outlet valve shut, check membrane outlet gauge (on top of storage tank) and verify that the pressure rises above 130 psi. If not, there are leaks between the compressor and storage tanks or the inlet carbon filter and compressor filter may be clogged.
2. Verify that compressor should turn on at 90–100 psi and turn off at 110–125 psi. If not, readjust. NOTE: In higher altitude locations, the pressures may need to be adjusted to the low side of specifications.
3. Verify that the nitrogen storage system is not leaking. With generator outlet valve shut and the air compressor off, verify that there is no decrease in pressure on the nitrogen regulator module gauge. If a decrease is present, the one-way valve, storage tank or nitrogen regulator module may be leaking.
4. Verify during compressor run that the coalescing filter purges the collected water and reseals during the next compressor run. The oil sump drain can be used to speed the cycling of the air compressor.
5. At each compressor start, verify that the solenoid valve diverts to atmosphere. At each start, there will be a strong hissing sound for two minutes. If not, the solenoid valve may have failed. If the hissing sound is heard for something other than two minutes, the solenoid timer is misadjusted. Push the corresponding buttons on timer to display 110 (seconds).

2nd Generation Nitrogen Generator System Manual

CLIMATE CONTROL

As soon as electrical power is supplied to the Generator system, the cool air stream blower will start to operate. The blower will run continuously so that the controller can monitor the enclosure's internal temperature. The enclosure temperature will be displayed on the face of the controller.

If the enclosure temperature is greater than the factory cooling set point of 80°F, the "Cool" status LED will flash. This indicates that the coolant compressor's automatic off cycle timer is working. The off cycle timer is factory set at 3-1/2 minutes. At the end of 3-1/2 minutes, the coolant compressor and the condenser air blower will begin to operate. This signifies that the cooling system has begun operation to remove heat and humidity from the enclosure. This procedure may take 20 to 30 minutes before it reaches full capacity.

When the temperature inside the enclosure decreases 7°F below the "Cooling on" set point, the coolant compressor and the condenser blower will cycle off. The cool air blower will continue to operate, circulating air within the enclosure. The controller has a factory programmed temperature differential of 7°F. Example: "Cooling on" @ 80°F; "Cooling off" @ 73°F.

The climate control system also provides power to three external heaters which are mounted in various places within the equipment enclosure. If the enclosure temperature is below the factory heating set point of 63° F, the heat status LED will be "on". This indicates the heat relay has been energized and is providing power to the three 400 watt heaters (there is no time delay before heating begins). When the temperature of the enclosure rises 7°F above the set point, the controller will de-energize the heat relay and cycle the heater "off".

NOTE: There is a dead band programmed into the controller that prevents heating and cooling from operating simultaneously.

PROGRAMMING THE CONTROLLER

The controller has been programmed at the factory with typical default settings for immediate system operation. Please review the following default settings:

- | | |
|-------------------------------------|-------------------|
| 1. Cooling system on temperature | 80° F |
| 2. Heating system on temperature | 63° F |
| 3. High enclosure temperature alarm | 105° F |
| 4. Low enclosure temperature alarm | 40° F |
| 5. Audible and Visual alarm | "ON" |
| 6. Digital display in degrees | Fahrenheit |
| 7. Filter maintenance alarm | 0 days – Disabled |
| 8. High condenser temperature alarm | 170° F |

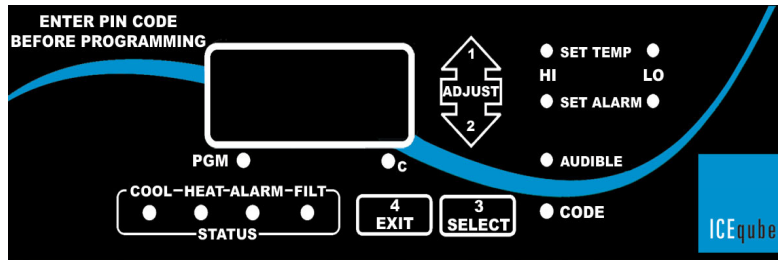


Figure 9 – Climate Control Interface

2nd Generation Nitrogen Generator System Manual

CLIMATE CONTROL (continued)

The temperature alarm settings have been preset to protect the generator system before known failure values. Changing these values is generally not recommended; however, if the above factory values have been inadvertently changed, the following programming information is provided for reference.

To change the factory default settings, enter the programming code sequence:

- “1 Adjust-up” arrow
- “2 Adjust-down” arrow
- “3 Select”
- “4 Exit”

After pressing the above sequence, the program LED should illuminate along with three alternating flashing boxes on the display face, indicating the code was accepted. If no selection is made within one minute, the system returns to the normal operating mode.

NOTE: Pressing the “4 Exit” button at any time while in the programming mode returns the controller to the normal operating mode.

Press the “3 Select” button to continue programming. The set temperature “HI” LED illuminates with the display indicating the ‘cooling on’ setpoint. The coolant compressor will begin operation at this temperature and will remain operating until the enclosure temperature decreases approximately seven degrees Fahrenheit (four degrees Celsius). Press the “1 Adjust-up” or “2 Adjust-down” arrow until the desired set point is displayed. The range for this adjustment is 70°F to 126°F, (21°C to 52°C). When the adjustment is complete, press the “3 Select” button to continue.

The set temperature “LO” LED is *on* with the display indicating the ‘heating on’ set point. The heating system will begin operation at this temperature and remain operating until the enclosure temperature increases approximately seven degrees Fahrenheit (four degrees Celsius). Press the “1 Adjust-up” or “2 Adjust-down” arrow until the desired set point is displayed within a range of 0°F to 63°F (–17.8°C to +17°C).

NOTE: Review alarm settings if the ‘cool on’ or ‘heat on’ set points have been changed.

Press the “3 Select” button to continue. The set alarm “HI” LED is *on* with the display indicating the high temperature alarm setpoint. The alarm will activate at this temperature and will automatically reset at two degrees Fahrenheit (one degree Celsius) below this temperature. Press the “1 Adjust-up” or “2 Adjust-down” arrow to change the alarm setpoint to a point greater than 8°F (or 4°C) above the set temperature “HI” set point, to 135°F (or 57°C).

Press the “3 Select” button to continue. The set alarm “LO” LED is *on* with the display indicating the low temperature alarm set point. The alarm will activate at this temperature and will automatically reset at two degrees Fahrenheit (or one degree Celsius) above this temperature. Press the “1 Adjust-up” or “2 Adjust-down” arrow to change the alarm setpoint to a point no less than 8° F (4°C) below the set temperature “LO” set point to –20°F (or –29°C).

2nd Generation Nitrogen Generator System Manual

CLIMATE CONTROL (continued)

Press the “**3 Select**” button to continue. The alarm LED will flash and the display will show “ALL”, indicating the “ALL” alarm on/off status. Press “**3 Select**” and the display will show either “ON” or “OFF”, indicating current alarm status. Press “**1 Adjust-up**” or “**2 Adjust-down**” to toggle the mode as desired. If the “OFF” mode is selected, no alarms will activate and the audible on/off select function is skipped.

Press the “**3 Select**” button to continue. The audible LED will flash and the display will show “AUD”, indicating the audible alarm on/off status. Press “**3 Select**” and the display shows “ON” or “OFF” indicating the current audible alarm status. Press “**1 Adjust-up**” or “**2 Adjust-down**” arrow to toggle the mode desired.

Press the “**3 Select**” button to continue. The “C” LED flashes and the display shows either “F” for degrees Fahrenheit or “C” for degrees Celsius. Press the “**1 Adjust-up**” arrow or “**2 Adjust-down**” arrow to toggle the mode as desired.

Press the “**3 Select**” button to continue. The code LED is on and the display shows “PIN”. To set a new user PIN code, press the “**1 Adjust-up**” button. The display will flash “4”, prompting an entry of a four button sequence using the “**1 Adjust-up**”, “**2 Adjust-down**”, “**3 Select**” and/or “**4 Exit**” buttons. Any sequence of the four buttons may be programmed as the code. As the buttons are pressed, the display will show the number of buttons that were pressed.

NOTE: After pressing a button, there will only be 5 seconds to press the next button. If the next button is not pressed within the allotted time, the system will default to no PIN code, indicated by “0” on the display. Once the sequence is entered the display will no longer flash, and will show “4”.

 **CAUTION - Always record the selection sequence (PIN code) and store in a secure place.**

Press the “**3 Select**” button to continue. The filter LED flashes and the display will show “FIL”, indicating the filter alarm days selection. Press the “**3 Select**” button and the display will show the number of days that the alarm is set in one-half day increments. Example: 10.5 indicates the alarm will activate every ten and one-half days.

Press the “**1 Adjust-up**” or the “**2 Adjust-down**” arrow to vary the desired number of days. Programming 0 days will disable the alarm.

NOTE: The required number of days to set this alarm will be determined by the ambient air conditions.

2nd Generation Nitrogen Generator System Manual

ALARMS

The nitrogen generator system features non-powered alarm contacts that can be used to monitor the condition of the system externally. The following table lists each alarm and its corresponding cause, terminal condition and the maximum rating for the monitoring system.

Alarm	Condition	Terminal Condition	Electrical Rating
Low Gas Space Pressure	Gas space pressure has gone lower than 0.2 psi	Contact closes between terminals 1 and 2	1A, 120VAC or 2A, 30VDC
High Gas Space Pressure	Gas Space pressure has exceeded 5.5 psi	Contact closes between terminals 2 and 3	1A, 120VAC or 2A, 30VDC
Low Nitrogen Storage Tank	Nitrogen Storage tank has fallen lower than 50 psi.	Contact close between terminals 4 and 5 AND contact opens between terminals 5 and 6	5A, 250VAC or 5A, 30VDC or 0.8A 125VDC
Generator Temp Alarm	Internal air space has risen above 105°F OR fallen below 40°F	Contact closes between terminals 7 and 8	40A, 125VAC

NOTE: All ratings listed are resistive.

Table 2 – External Alarms

2nd Generation Nitrogen Generator System Manual

SHUT DOWN

Under normal operation, the unit can be left on. The compressor will switch on/off automatically according to the storage vessel pressure (100 psi on, 125 psi off). The unit should only be switched off for maintenance work using the following procedure:

1. Disconnect the main power feed to the generator.
2. The compressor side of generator will automatically (but gradually) decompress for approximately 1 minute.
3. Nitrogen storage tank will continue to maintain pressure to regulation module unless manually drained. If necessary, close the output valve to the air space and drain storage tank with regulation panel sump drain.

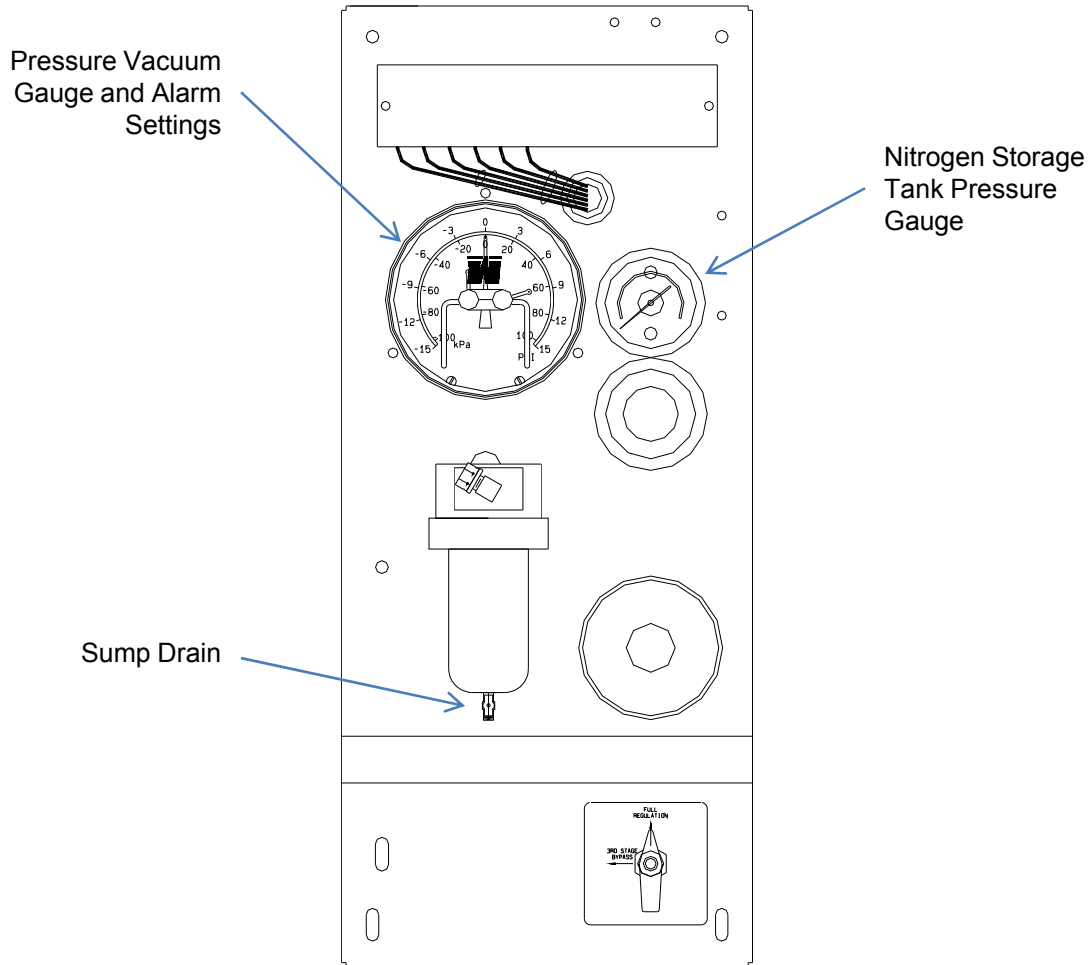


Figure 10 – Regulation Module Assembly

2nd Generation Nitrogen Generator System Manual

MAINTENANCE

NOTE: COMPLETE FILTER REPLACEMENT KIT IS AVAILABLE, PART NO. 1030-1727K.

CARBON FILTER MUST BE CHANGED BI-ANNUALLY

Install a new carbon absorber/dust filter, Part No. 1030-1231:

1. Open the door to the generator unit.
2. Slide the carbon filter out of the retaining brackets.
3. Install a new filter, making note of the airflow direction.
4. Close the door to the generator unit.

AIR COMPRESSOR INLET FILTER — REPLACE BI-ANNUALLY OR EVERY 400 HOURS

Install a new filter, Part No. 1030-1301:

1. Disconnect power to the generator unit.
2. Open the door to the generator unit and unscrew the air compressor filter assembly.
3. Inspect for contamination on air compressor inlet side of the filter. If contaminated, the system has pumped contaminants through the system and the coalescing/final filter elements must be replaced.
4. Install the new air compressor filter assembly.
5. Release pressure from nitrogen storage tank using the sump valve (see figure 10 on page 16) until 95 psi remains.
6. Close the generator door and reconnect power.
7. Verify that compressor successfully charges the storage tank — this process should take approx. 10 minutes.

OIL SUMP — CLEAN BI-ANNUALLY OR EVERY 400 HOURS

The oil sump must be checked and cleaned periodically:

1. Disconnect power to the generator system.
2. Close the outlet valve to isolate the gas space from generator system.
3. Make sure unit is de-pressurized by opening the sump valve (see figure 10 on page 16).
4. If necessary, clean the oil sump with soap and warm water. The housing can be unscrewed from the mounting base for cleaning. Tighten housing securely but do not overtighten.
5. Reconnect power and verify that the compressor successfully charges the storage tank — this process should take approx. 10 minutes.

⚠ CAUTION - Use only mild soap and water for cleaning. Do not use degreaser or other incompatible chemicals.

COALESCING & PARTICLE FILTER ASSEMBLIES — REPLACE BI-ANNUALLY OR EVERY 400 HOURS

Install new filters as a set, Part Nos. 1030-1300 (coalescing) and 1030-1303 (particle):

1. Disconnect power to the generator system (see Figure 7 on page 9).
2. Close the outlet valve to isolate the gas space from generator system.
3. Carefully unscrew the filter housings (retain housing O-rings for reuse) from the bodies.
4. If necessary, clean the filter housings with soap and warm water.
5. Replace coalescing and particle filters and O-rings.

2nd Generation Nitrogen Generator System Manual

MAINTENANCE (continued)

COALESCING & PARTICLE FILTER ASSEMBLIES — installation instructions (continued)

6. Tighten housings securely but do not over-tighten.
7. Release pressure from nitrogen storage tank using the sump valve (see figure 10 on page 16) until 95 psi remains.
8. Reconnect power and verify that the compressor successfully charges the storage tank — this process should take approx. 10 minutes.

CLIMATE CONTROL FILTER — REPLACE BI-ANNUALLY

Install a new filter, Part No. 1030-1302:

1. Replacement of the climate control filter is dependent of outside conditions such as dust or other debris.
2. Slide the climate control filter from the retaining brackets. Some units may require removal of the brackets.
3. Replace filter.

OTHER MAINTENANCE

STORAGE TANK PRESSURE SWITCH

The pressure switch setting is factory set and normally should not change. If problems are encountered during shipment or maintenance activity the following procedure is for reference.

1. Disconnect power to the generator.
2. Remove pressure switch cover.
3. Loosen the lock nut with 3/4" open end wrench.
4. Using a 5/8" open-end wrench, turn the adjuster clockwise to increase the setpoint and counterclockwise to decrease the setpoint.
5. Hold the adjuster with wrench and tighten lock nut.
6. If deadband adjustment is required, turn thumbwheel clockwise to increase deadband and counterclockwise to decrease deadband.
7. Reinstall cover and reconnect power to generator to check adjustments.

DOOR GASKET

Inspect door gasket bi-annually for rips, tears or misalignment.

ADJUSTING THE PURITY

The purity of the nitrogen is factory preset. The purity of the nitrogen gas can be set between 97% and 99.5%.

IMPORTANT: Adjusting the purity is a procedure that requires a skillful technician with a knowledge of the process. If this procedure is to be done, we require service by Waukesha Electric Systems to prevent voiding warranty.

2nd Generation Nitrogen Generator System Manual

TROUBLESHOOTING

Compressor does not operate	<ul style="list-style-type: none"> • Power source is off 	<ul style="list-style-type: none"> • Turn main power source on
	<ul style="list-style-type: none"> • Unit is in “Standby” status 	<ul style="list-style-type: none"> • Wait until pressure in storage vessel is reduced
	<ul style="list-style-type: none"> • Temperature is too high or low 	<ul style="list-style-type: none"> • Ambient temperature is too high (above 40°C) • Climate control is not functioning properly and should be checked • Call Waukesha
Membrane pressure or delivery pressure too low (continuous run)	<ul style="list-style-type: none"> • Inlet filter is contaminated 	<ul style="list-style-type: none"> • Replace the carbon filter and compressor inlet filter
	<ul style="list-style-type: none"> • Leaks in the hoses or connections 	<ul style="list-style-type: none"> • Seal any leaks*
	<ul style="list-style-type: none"> • Excessive consumption 	<ul style="list-style-type: none"> • Contact Waukesha to confirm appropriate application
	<ul style="list-style-type: none"> • Pressure switch mis-adjusted 	<ul style="list-style-type: none"> • Set pressure switch
	<ul style="list-style-type: none"> • Coalescing filter(s) dirty or bowls are leaking 	<ul style="list-style-type: none"> • Replace filters and check bowls for leaks*
Desired nitrogen flow not achieved	<ul style="list-style-type: none"> • One way valve leaking • Leaks in hoses or connections • Climate control not working 	<ul style="list-style-type: none"> • Replace the one-way valve • Seal any leaks* • Call Waukesha

* To check for leaks, use soap solution of leak-tracing spray.



2nd Generation Nitrogen Generator System Manual



NOTES