

February 1, 2018

FPE MODELS TC-525 & TC-546 SPRING DRIVE TEAR DOWN, MAINTENANCE AND REPAIR

In this white paper, we will discuss tear down, maintenance and repair of the FPE TC Series spring drive mechanisms. We stock many of the components that will be discussed and for those who might be interested, we offer full tear down and overhaul services for each of the FPE TC Series spring drive mechanisms. As a part of the discussion, a comparison of the models that were produced will be offered and the key differences in the models will be highlighted and described. The information we provide will help to ensure you properly identify your model and are positioned to recognize and procure any replacement components that you ultimately need as a result of your inspection. Key activities that should be completed, including major items that should be inspected and maintained, will be listed and discussed. Helpful tips to aid in tear down and inspection will also be shared.

Two major variations of the FPE TC spring drive mechanisms were manufactured. Much of the design and "componentry" of each variant were similar, but they were not identical. The first variant model numbers are TC-525 and TC23-2. The second variant model numbers are TC-546, TC15 and TC23-1. Referring to the series of figures below (labeled Figure 1), the main differences between the model variants are labeled and described.

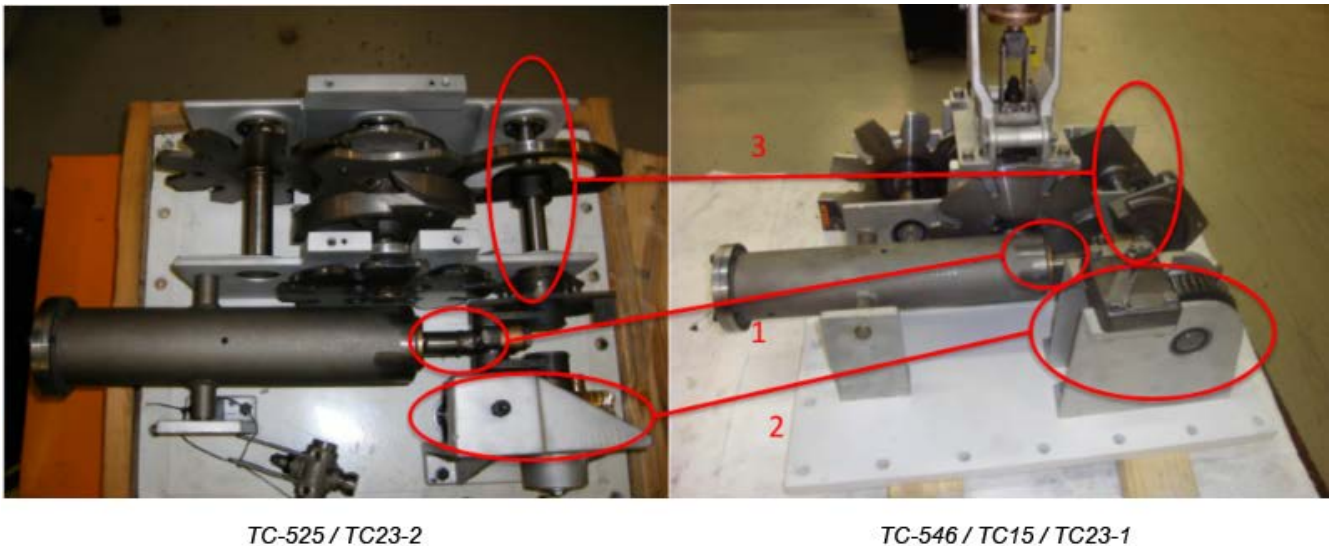
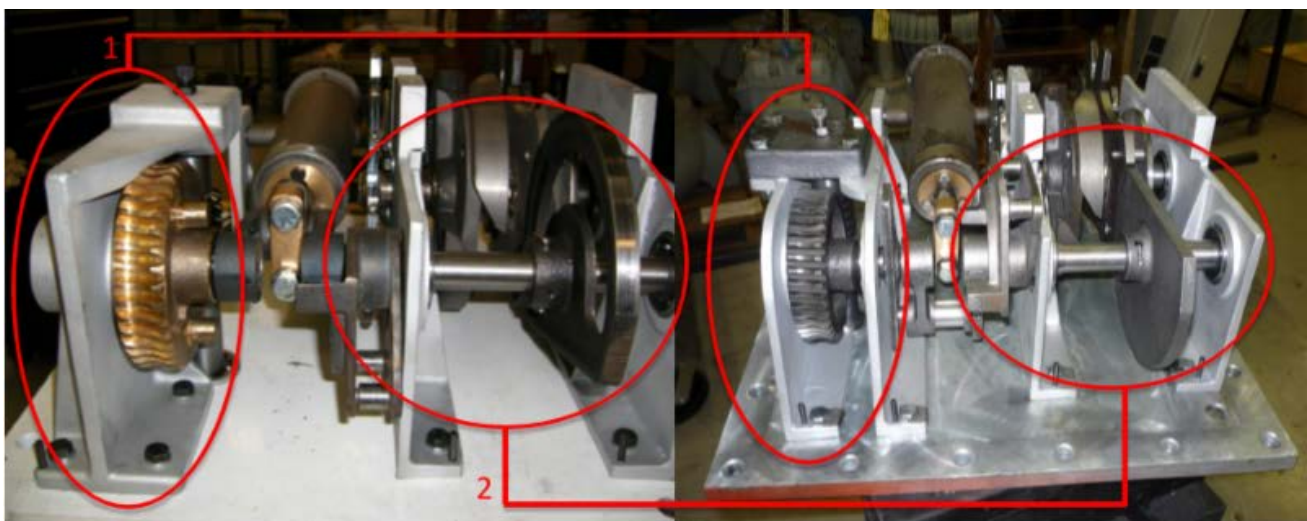


Figure 1

Figure 1 above depicts a top view of each variant in which three main differences in the two models are circled in red and numbered. Below is the description of each of the numbered differences:

1. Drive spring barrel assembly for the TC-525 has a 1" diameter shaft, while the same shaft on the TC-546 has a 3/4" diameter.
2. Dimensions and materials of the vertical drive shaft, worm gear and worm gear support structure are different.
3. Dimensions and materials of the lock plate and first shaft assembly are different.



TC-525 / TC23-2

TC-546 / TC15 / TC23-1

Figure 2

Figure 2 above provides a left side look at both variants, resulting in another view of two of the three main differences in the models. The differences are circled in red and numbered. Below is the description of each of the numbered differences:

1. Dimensions and materials of the vertical drive shaft, worm gear and worm gear support structure are different.
2. Dimensions and materials of the lock plate and first shaft assembly are different.

Inspection and Evaluation of Component Wear

The next few figures depict examples of the "typical" wear conditions that can be found during the tear down and inspection of the FPE TC Series spring drive mechanisms. Descriptions of the specific wear conditions are presented in Figures 3 through 7, including visual identifiers which help illustrate the worn condition and aid in pinpointing locations of key components that should be inspected.

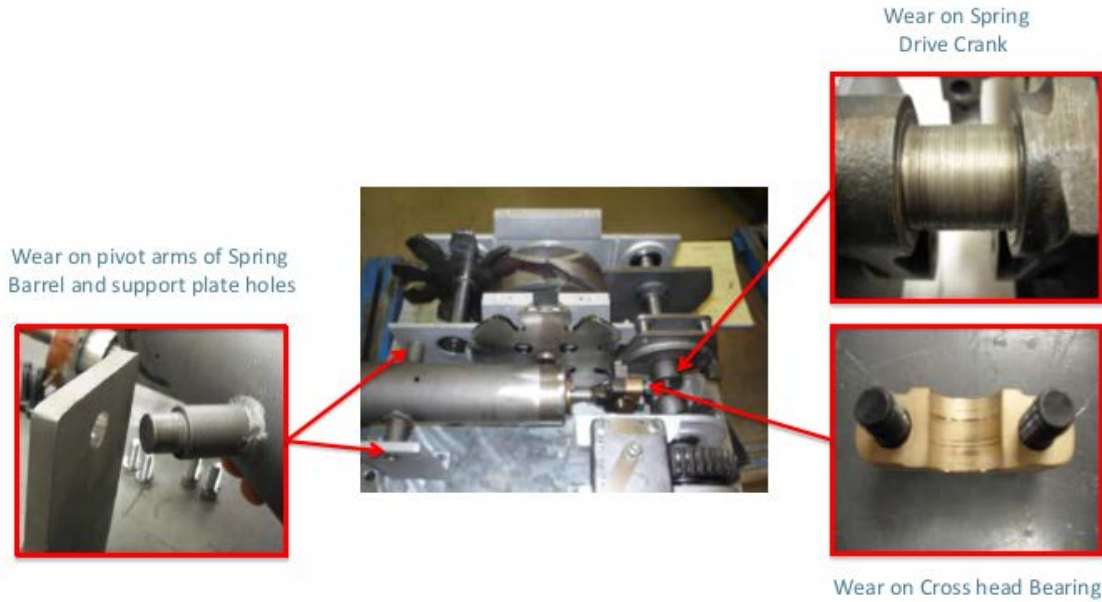


Figure 3: Wear Patterns on Key Components

Figure 3 above shows the locations and types of wear that can occur on the spring barrel mount and support plate holes. Typical wear on the spring drive crank and the cross head bearing is also depicted.

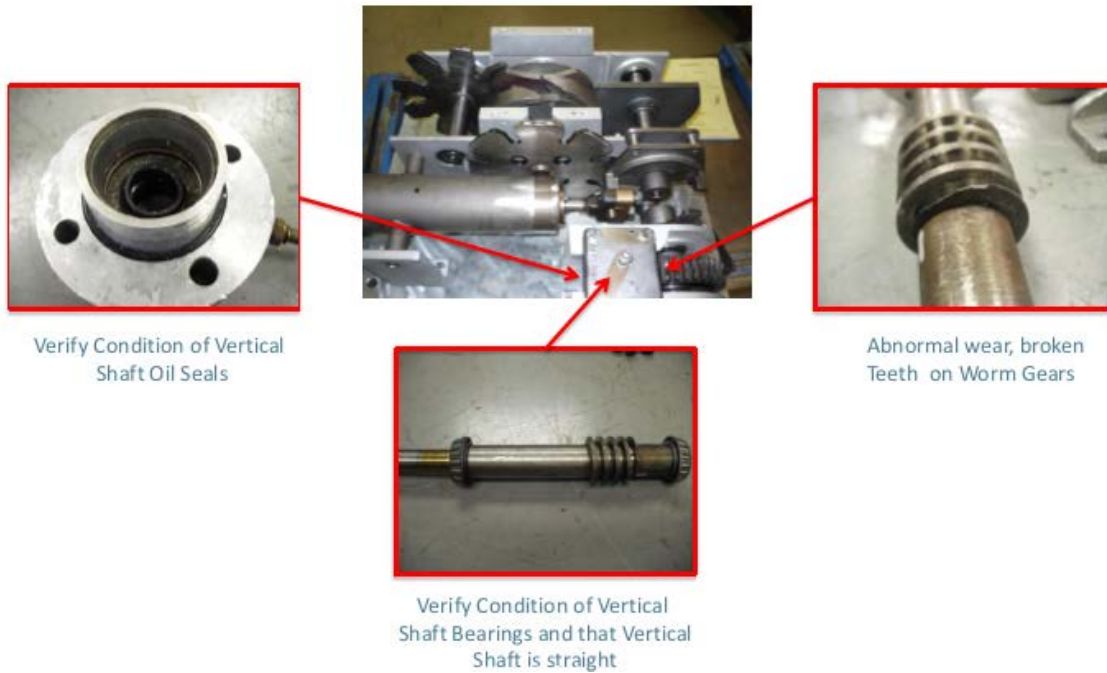


Figure 4: Inspection Points on Main Spring Drive Barrel Assembly

Figure 4 above provides visualizations of each of the major inspection points on the main spring drive barrel assembly. Brief descriptions of the individual items are included for reference.

Figure 5 below shows the locations and types of wear that can occur on the Geneva wheels and scroll cam. Excessive wear and separation of the laminated plates on both Geneva wheels are shown. *NOTE: The scroll cam depicted in the picture has excessive wear.*



Figure 5: Wear Patterns on Geneva Wheels and Scroll Cam

Figure 6 below shows the locations and types of wear that can occur on the vertical shaft. Pay special attention to worn or broken teeth on the worm gears. Also, inspect the area where the shaft seals contact the shaft to ensure that grooves have not worn into the shaft.

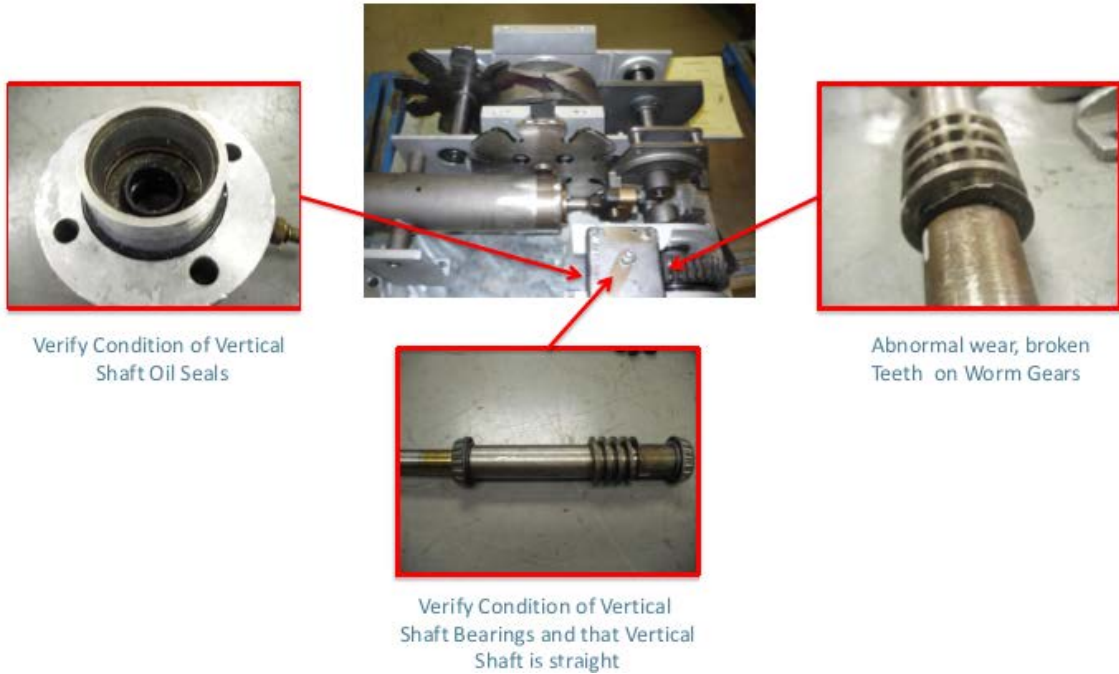


Figure 6: Wear Patterns on Vertical Shaft

Ensure the vertical shaft is straight and verify condition of the oil seals. Refer to Figure 7 below for detailed information on the two types of vertical shaft oil seal assemblies that were used.

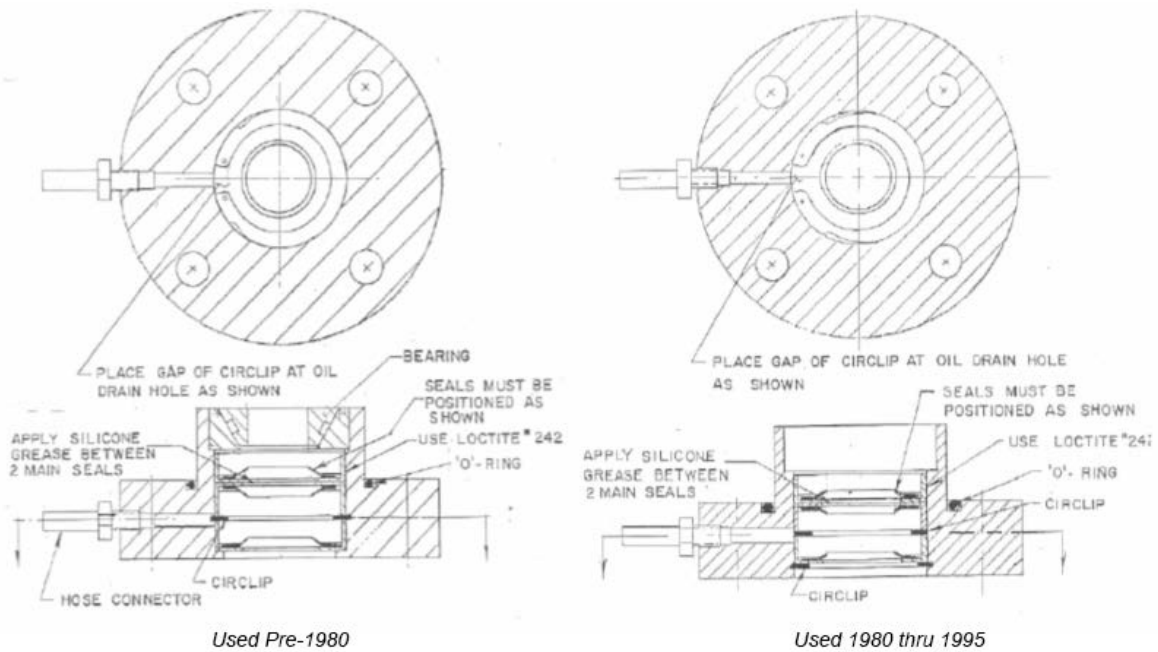


Figure 7

Figure 7 above contains schematics of the two oil seal assembly configurations for the FPE TC Series spring drive mechanisms. When inspecting your FPE TC spring drive mechanism, this is a component that should always be inspected in detail and care should be taken to verify the condition of the oil seal assembly. For the TC-546, the replacement part number is 4000-682. For the TC-525, the replacement part number is 4000-731.

Tear Down, Maintenance and Repair

If you plan to self-perform tear down, maintenance and repair of your FPE TC Series spring drive mechanism, several key activities should be completed to ensure high quality results. Those key activities are presented in the bulleted list below for a TC-546 spring drive. The list is accompanied by Figure 8 which includes an exploded view of a TC-546 spring drive mechanism. Figure 8 is meant to provide a visual aid to assist in pinpointing and understanding each of the key activities that need to be performed. Key activities include:

- Always replace all bearings (bearing kit, part number 4000-079K)
- Replace the oil seal assembly
- If the 3rd shaft assembly needs replacement, upgrade to the solid Geneva gear design offered by SPX Transformer Solutions Components Group (third shaft assembly, part number 4000-641)
- If the 2nd shaft assembly needs to be replaced, replace with the original Geneva gear design offered by SPX Transformer Solutions Components Group (second shaft assembly, part number 4000-626)
- Replace any gears that have broken teeth or exhibit excessive mechanical wear
- Always fully disassemble and fully inspect the main spring drive barrel assembly (main spring drive barrel assembly for TC-546, part number 4000-371)
- Replace all locking hardware, i.e. lock washers, nyloc nuts, locking tabs and spring pins

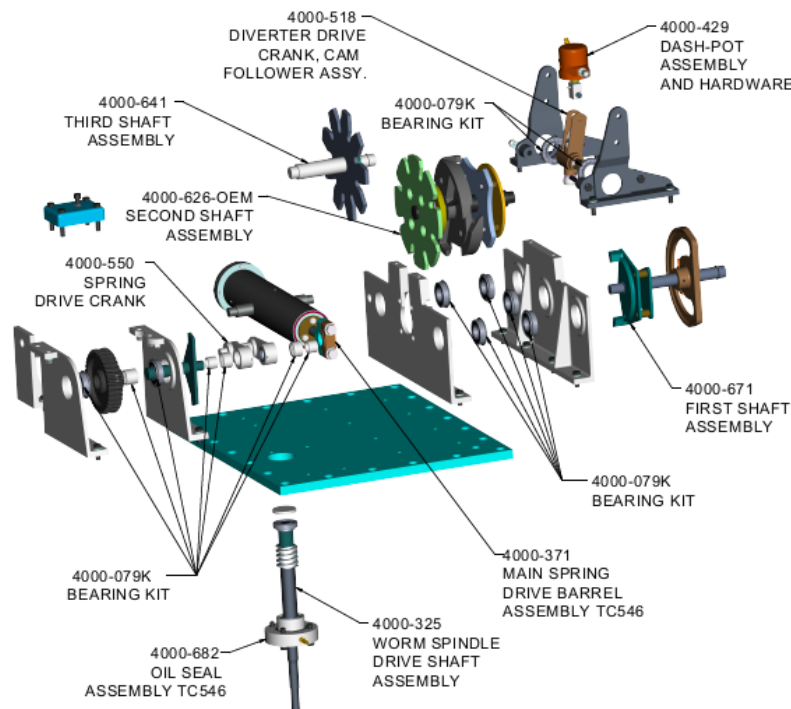


Figure 8: Exploded View of FPE TC-546 Spring Drive Mechanism

Finally, when planning to self-perform a comprehensive tear down, maintenance and/or repair of your FPE TC Series spring drive mechanism, always remember to complete the following activities before removing any parts of the assembly:

- Ensure the mechanism is in neutral position
- Match mark all mating gears with metal marker
- Remove all locking spring pins, securing support plates to the mechanism base plate
- Mark current location of all corners of support plates on the base plate for future reference

AUTHOR:

Damon Jones

General Manager – Components Group

Damon Jones joined SPX Transformer Solutions in April 2017 as General Manager for the Components business in Dallas, Texas. Damon started his career with Siemens in 1999 and spent 15 years serving the domestic and international power generation/transmission/distribution markets. During that time, he held positions of increasing responsibility in sales, product development, project management and general management, both domestically and abroad. Damon holds a Bachelor of Science Degree in Mechanical Engineering from Clemson University and a Masters of International Business Studies from the University of South Carolina.

To learn more about all components available for the Federal Pacific line of LTCs, visit our website at www.spxtransformersolutions.com or contact a member of our sales team at 1-800-338-5526. Also, don't forget about our library of [easy-to-navigate, 3D catalogs](#) designed to help you quickly identify and locate hard-to-find components for LTCs and oil circuit breakers, while also including one for the SPX Transformer Solutions' line of Transformer Health Products®.



Our 30-year history of providing replacement parts for the majority of OEM LTCs has allowed us to develop the capability to confidently engineer, manufacture and support a myriad of design-enhanced replacement parts. We welcome calls from customers seeking technical support on LTCs.